



**COLLEGE
CHURCH**
1841-2017

St. Francis Xavier (College) Church

The Jesuit Parish in the Heart of St. Louis
3628 Lindell Blvd. | St. Louis, MO 63108

Phone: 314-977-7300
sfxstl.org

@collegechrchstl



Saint Francis Xavier
College Church

December 3, 2017 First Sunday of Advent

LITURGY SCHEDULE

Saturday 5:15 pm Anticipation of Sunday
5:30 pm beginning Jan. 6, 2018

Sunday 8:00 am, 10:30 am and 4:30 pm

Monday - Friday
7:15 am, Noon, 5:15 pm
In the Chapel of Our Lady located in the lower level.

Saint Louis University Campus Ministry:
Sunday: 9:00 pm (when the University is in session)

Sacrament of Reconciliation
Monday-Friday: 10:45 am through Noon
Saturday: 4:00 pm through 5:00 pm

MISSION STATEMENT

We, the members of St. Francis Xavier College Church, form a welcoming Jesuit parish community. As followers of Jesus Christ, we praise God, love our neighbors as ourselves, celebrate liturgy and the sacraments, engage in lifelong formation and proclaim God's reign of justice, mercy and peace.

PARISH INFORMATION FAX: 314-977-7315 E-MAIL ADDRESS: church@slu.edu

The Parish Center is closed if St. Louis City Schools are closed due to bad weather. Activities and events are also cancelled.

Hours: Monday - Friday 8:30 am to 4:30 pm, Saturday we are closed & Sunday: 8:30 am to 1:00 pm.

Bulletin Notices: must be submitted to marykay.horan@slu.edu by noon on Thursday, ten days before the bulletin date. Holidays require additional time.

Infant Baptisms: contact Fr. Jason Brauninger, SJ at 314-977-7301 for scheduling and preparation information at least 45 days in advance. Baptisms are celebrated on the first and third Sunday of the month, at 12:00 pm.

Christian Initiation of Adults: contact Joe Milner at 314-977-7305 or joseph.milner@slu.edu

Marriages: contact Sandy Hauck at 314-977-7303 for scheduling and preparation information.

Funerals: contact Fr. Dan White, SJ or Sister Carolyn McWaters, RSM. To notify the parish of a funeral for a family member not at the College Church, please contact Mary Beth Erickson at 314-977-7304 or church@slu.edu.

Disability Access: Our church has an elevator and hearing assistance system. Please see an usher for assistance.

Parish Registration: Available online at collegechurch.slu.edu or at the Parish Center front desk. For questions, contact Mary Beth Erickson at 314-977-7304.

Religious Education: Available for kindergarten through eighth grade. Classes meet September - May on Sunday mornings. Ages 3-6 use the Catechesis of the Good Shepherd. Contact Angie Doerr at 314-977-7302 or angeline.doerr@slu.edu

Liturgy of the Word for Children: Celebrated weekly for children in kindergarten - seventh grade at 10:30 am Sunday Mass. Childcare is available for children ages six months through pre-kindergarten during the 10:30 am Mass in the Parish Center Nursery. Contact Angie Doerr at 314-977-7302 or angeline.doerr@slu.edu.

Tours of the Church: Contact Mary Beth Erickson at 314-977-7304 or email church@slu.edu

PASTORAL STAFFPastor

Daniel White, SJ
314-977-7300
daniel.white@slu.edu

Associate Pastor

Jason Brauninger, SJ
314-977-7301
jason.brauninger@slu.edu

Parish Administrator

Katie Jansen Larson
314-977-1954
katherine.larson@slu.edu

Parish Life

Mary Beth Erickson
314-977-7304
mary.erickson@slu.edu

Christian Initiation, Adult Formation, & Marriage Ministry

Joe Milner
314-977-7305
joseph.milner@slu.edu

Religious Education & Family Life

Angie Doerr
314-977-7302
angeline.doerr@slu.edu

Social Ministry

Christine Dragonette
314-977-7309
christine.dragonette@slu.edu

Wedding Ministry

Sandy Hauck
314-977-7303
sandy.hauck@slu.edu

Choir Director

Ray Sherrock
raymond.sherrock@slu.edu

Director of Wedding Music and Accompanist

Sue Martin
314-977-7313
susan.martin@slu.edu

Outreach Services Coordinator

Emily Edwards
314-977-7311
sfxjvolt@slu.edu

Pastoral Council Chair

Jeff Leonard
314-282-0128
jeff.leonard@me.com

Deacon

Jim Griffard
james.griffard@slu.edu
314-977-7318

Safe Environment Program Director

Terry Edelmann
314-712-4216
marietherese.edelmann@slu.edu

Liturgy & Music

Sister Carolyn McWatters, RSM
314-977-1797
sfxlitin@slu.edu

Events & Communication

Coordinator
Mary Kay Horan
314-977-4184
marykay.horan@slu.edu

Coordinator of Religious Education

Sam Herbig
314-977-7318
sam.herbig@slu.edu

PRAY FOR THE SICK

- Joan McLean
- Carolyn Langston
- Jim Kalchik
- Steve Kaiser
- Bob Powers
- Dan Trueman
- Leslie Matula
- Diane Williams
- Fr. Dave Corrigan, SJ
- Kandice Draper
- Lula Chatman
- Don Berg
- Greg Fiudo
- David Byrnes
- Paul Byrnes
- Pam Orbin
- Art Taylor
- Diane Mees
- Melias A
- Rosemary P
- Mary Bruemmer
- Geri Greger
- Lisa Zimmerer
- Pat March
- Liz DeRum
- Wayne and Tuck Loui
- Cheryl Rauschenbach
- Delores Garrido
- Kathy Fitzgerald
- Mary Beth Erickson
- Nancy Partridge & service dog Glider
- Maryann Cochran
- Ann Koolman
- Joe Lynne
- Catherine Walz
- Theresa Poetz
- Mary Jo Munkel
- John and Colin Martin
- Tom Reilly
- Monica Gunn
- Neil Kielty
- Carol Williams
- Pat Darcy
- Linda Riek
- Paul Hanson
- Betty Will-Bower
- Mary Geary Dunn
- Alice Edler
- Kath Engelhardt
- Anthony Johnson
- Katherine Mansfield
- Jeanne Hermann
- Cooper Treacy
- Codie Oberson
- Bruce Meadows
- Katherine Mansfield
- Melissa Belk

Call Mary Beth at 314-977-7304 to add or remove names.

FROM THE PASTOR'S DESK

December 3 is the feast of our patron St. Francis Xavier, except it is not. The first Sunday of Advent takes his place. There is no need to feel slighted, however, because the legacy of Francis is a helpful guide to begin the Advent season.



St. Francis Xavier is recognized for his missionary travels in Asia. The places where he proclaimed the Gospel now include countries such as India, Malaysia, Indonesia, the Philippines, Japan and China. Those countries now include some of the most vibrant, dynamic Catholic communities in the world. He was hardly the sole person planting the seeds of faith, but Francis was often the first and he inspired many who followed him.

Francis could not have imagined that his labors would be the start of a seismic shift in Christianity. Scholars now speak of the Church's migration to the Southern Hemisphere. The cultures, languages, and lands he visited are the Church's heart. The faithful of the vast regions Francis roamed now far outnumber European Catholics. The present and future of the faith is intimately linked to the world he traveled.

Hope is the great spiritual theme of Advent. The long, dark nights remind us to hope in the presence of the light. Like us, St. Francis Xavier put his hope and trust in the Lord's faithfulness. And like ourselves, he could never have dreamed God's abundant blessings would make his efforts so fruitful.

**FAIR TRADE
CHRISTMAS MARKET
TODAY, 9 am- 1 pm
Ballroom**

Shop for beautiful and unique hand-crafted items, plus coffees, teas, and chocolates.

PRAY FOR THE DECEASED

Please remember in your prayers Eileen McCann, twin sister of Maureen Hoock of our parish and Marguerite Conrad, mother of Peter Conrad of our parish. May they and all the departed share in the peace and joy of God's presence forever.



WELCOME TO COLLEGE CHURCH!

INTRODUCTORY RITES

Gathering Song: Come, Emmanuel

Tony Alonso

Verse Response



Come, O come, Em - man - u - el.

Refrain



Re - joice! Re - joice! Em - man - u - el shall



come to you, O Is - ra - el.

Copyright © 2001 by GIA Publications, Inc. All Rights Reserved

LITURGY OF THE WORD

Children's Dismissal for Liturgy of the Word

Gather 324

Responsorial Psalm: Psalm 80, Lord, Make Us Turn to You

Marty Haugen



Lord, make us turn to you, show us your face, and



we shall be saved.

Gospel Acclamation: Advent Alleluia

Luke Mayernik



Al - le - lu - ia, al - le - lu - ia, al - le - lu - i - a!



Al - le - lu - ia, al - le - lu - ia, al - le - lu - i - a!

Music © 2007, Luke Mayernik. Published by TRINITAS. All rights reserved.

THE NICENE CREED MAY BE FOUND ON THE INSIDE COVER OF THE HYMNAL

Intercession Response: Come Quickly, Lord

Huck, Alonzo

The musical notation is written on a single staff in treble clef, with a key signature of two sharps (F# and C#) and a 3/4 time signature. The melody consists of quarter and eighth notes. The lyrics are: "Come quick - ly, Lord, in mer - cy come. Come quick - ly, Lord, in mer - cy come." The first line is marked "Cantor:" and the second line is marked "All:". Below the staff, there is a section titled "After each Intercession" with the lyrics: "Lift up, O Church, this world to God: Come quick - ly, Lord, in mer - cy come." This section also has "Cantor:" and "All:" markings.

Text: Gabe Huck, © 2004
 Music: Based on CONDITOR ALME SIDERUM; adapt. and arr. by Tony Alonzo, © 2004, GIA Publications, Inc.

LITURGY OF THE EUCHARIST

Preparation of Gifts: God of All People

Gather 412

Eucharistic Prayer Acclamations: Mass of Light

Gather 361, 362, 363

COMMUNION RITE

Breaking of Bread: Lamb of God - Mass of Light

Communion Song: Jesus, Hope of the World

Gather 909

Meditation: As the Watchman

Michael Joncas

CONCLUDING RITE

Recessional Song: The King Shall Come When Morning Dawns

Gather 414

All rights reserved. Used with permission. LicensingOnline number U2821. WLP License ALC. Reprinted under OneLicense.net number A-704947.

MASS TIME CHANGE

Beginning Saturday, Jan. 6, 2018 the Mass in anticipation of Sunday will change
FROM 5:15 TO 5:30 pm.

ADVENT REFLECTION MATERIALS

The season of Advent is a few weeks away. It is a time of reflection and preparation for our celebration of God With Us. There are a number of books and booklets available to assist you on your journey.



They are available in the Lower Hall after the Sunday morning masses. **God With Us** is a full book of reflections from various authors and offers profound reflections on the journey toward God. There are Advent Calendars for young people. **Lift Up Your Heads** is a pop-up nativity scene with a door to open each day.

There are also books on living our Christian commitment each day. **Fr. Greg Boyle, SJ**, the author of our Lenten book this year, has a new book, **Barking at the Choir**, that highlights the importance of kinship. Julie Rubio spoke here before Thanksgiving. Her book, **Hope For Common Ground**, is available. Parishioners, Bridget Brennan and Jerry Shen have authored a book on marriage and Ignatian Spirituality, **Falling in Love ... Finding God**.

If you would like to reserve a copy for pickup at another time, please email Joe Milner, joseph.milner@slu.edu with the title you would like.

WHO ME? STUDY SCRIPTURE AND ITS MEANING FOR MY LIFE WITH A GROUP OF ADULTS?

Have you ever wanted to explore the Sunday scriptures and find out what they might say to your daily personal relationship with Christ Jesus? Well, have we got just the group for you! It's called "Dialogue with the Word," and it takes place on Sundays after the 8:00 Liturgy (about 9:30) to about 10:20. This way folks can do this *after* the 8:00 or *before* the 10:30 Liturgies. No preparation needed. Just come as you are! Teens welcome, folks fresh from RCIA welcome! Facilitators are Lea Koesterer, Steve Gilbert, and Carla Mae Streeter, OP. Contact Carla Mae Streeter, OP (Coordinator) for more information at streeter@slu.edu or 314-256-8882.

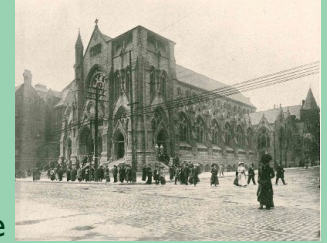
ADVENT INDIVIDUAL RECONCILIATIONS IN CHURCH Sunday, December 3 ~ 9:15 to 10:15 am

Ten gentle confessors will be available for individual reconciliation. Come prepare for Christmas with this wonderful sacrament of God's love and mercy. **All are invited to participate!!!**



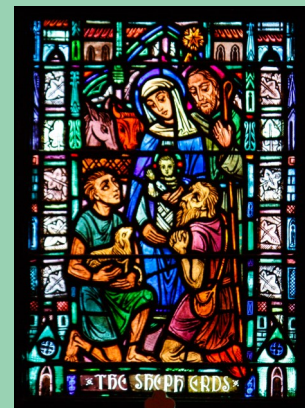
DO YOUR CHRISTMAS SHOPPING AT COLLEGE CHURCH!

Our Christmas and Antique Note Cards of the College Church are available



for purchase in the Parish Center. The boxed Christmas cards, contain 15 cards of three different designs; two from our beautiful Nativity window and one of our crèche. The cost for the Christmas cards is \$20/box. The antique note cards contain twelve cards of six different designs with a bit of College Church history on the back of each. They are \$15/box.

We also have window note cards for \$10, keepsake ornaments of the College Church for \$20 and our Saints in Glass book for \$35.



If you are interested in viewing or purchasing any of these items, contact Mary

Beth Erickson at 314-977-7304 or email church@slu.edu.

FREE BILLIKEN BASKETBALL TICKETS

Saint Louis University has generously offered the College Church a limited number of free tickets to the Billiken game vs. Richmond on Saturday, January 6 at 7:00 pm in Chaifetz Arena.

Tickets must be requested prior to Dec. 18 by calling Mary Beth Erickson at 314-977-7304 or email church@slu.edu. Tickets will be distributed on a first come first serve basis.

When reserving tickets please indicate the number you need and if you have a child in 7th through 12th grade with your request. SLU requires a special form to be completed to comply with NCAA guidelines. We also need an email address to let you know when the tickets are ready for you to pick up at the Parish Center receptionist area during office hours.



**CHECK OUT
OUR WEBSITE:
sfxstl.org**

Check the website for online bulletins, homilies, our calendar and information about upcoming events!

CHRISTMAS EVE LITURGY CHILDREN'S TABLEAU

The Christmas Eve Liturgy for families will be held on Dec. 24 at 4:30 pm. We will once again involve our children in the dramatization of the Gospel.

All children, ages 5 and up, are invited to participate. We will need children to play the roles of the manger animals, shepherds and angels. We have a limited number of costumes so you may need to provide your own. **Participants are required to attend two rehearsals, both held immediately following the 10:30 am liturgies on December 10 and 17.**



If your child is interested in participating, please contact Angie at angeline.doerr@slu.edu.

SACRED ADVENT RETREAT

Embrace the Advent season as a sacred space from the ease of your e-mail inbox. *Sacred Advent* is a daily e-mail prayer break during a



busy season. Each day invites you to a step-by-step progression of praying with a Scripture reading and related points of reflection. The messages also include suggestions for further exploration of Advent themes through additional online articles and prayers. Based on the writings of *Sacred Space*—the trusted online prayer site by the Irish Jesuits—*Sacred Advent* will make this Advent a season filled with sacred moments.

Sign up to receive the daily messages from the First Sunday of Advent, December 3, 2017, through the Christmas season. The messages will come from the *Year in Our Church* from Loyola Press. Sign up is available at:

<https://www.loyolapress.com/our-catholic-faith/liturgical->

CENTERING PRAYER GROUP

We invite those who are interested in joining fellow parishioners in silent reflective prayer while gathered with others. We meet through the Contemplative Outreach of St. Louis and meet the third Sunday of the month. Next meeting will be Sunday, Dec. 17 at 9:15 am in Room 14 in the Parish Center. Interested in discovering more? Please join us! For more information, contact Mary Fitzgerald 314-223-0316.

SOCIAL MINISTRY



The Giving Tree 2017



Once again, Social Ministry is sponsoring a Giving Tree. You will notice a Christmas Tree near the front of the south aisle decorated with paper ornaments. To participate, simply take an ornament and purchase the listed gift, wrap it, and **bring it to the Parish Center by Sunday, December 10. Please do NOT leave your gift under the tree in church.** These gifts will be distributed to our guests who come to the Outreach Program in mid-December.

Please consider checking out the Giving Tree in these next couple of weeks. With the cold of winter approaching, our guests experiencing poverty and homelessness will be grateful for your gift. Contact Christine Dragonette with any questions at dragonettecm@slu.edu or 977-7309. Thank you!

Social Ministry Commission Seeking New Members in 2018

Do you consider social justice an integral part of your faith? Are you interested in helping our parish move forward in our service, justice, and peacemaking efforts? The Social Ministry Commission invites you to consider applying for membership.

We are especially interested in people who are interested in our four current goals (summarized here):

- ◆ Build a culture of anti-racism in our parish
- ◆ Participate with community partners in the creation of a regional plan for State ID and birth certificate access, while continuing advocacy work in the realm of photo ID requirements for voting
- ◆ Maintain and grow partnerships that allow us to better carry out the work of Social Ministry
- ◆ Partner across College Church ministries to help engage children, families, and young adults in service and justice work

For more information about being a part of the Social Ministry Commission, or to request an application, please contact Christine Dragonette at christine.dragonette@slu.edu or 977-7309. Applications will be due in mid-January.

Social Ministry Annual Christmas Appeal Next Two Weekends December 9-10, 16-17



Next weekend at Mass, you will hear parishioners share their experiences volunteering with College Church Social Ministry and request financial support for our programs. The majority of funding goes to our Outreach Program, which is the only program in the region providing ongoing and large-scale assistance with State ID cards and birth certificates. This and our other programs rely on your support in order to continue and grow.



The second collection on the weekends of both December 9-10 and December 16-17 will go directly to Social Ministry. Please consider making an end of year donation to support our work. Thank you for your generosity!

LITURGICAL CORNER

Engaging the Christian Journey

When setting out on any significant journey, it helps to have laid some groundwork before venturing out. We need to know, first of all, where it is we intend to go. Who will our companions be? The goal of our road trip and time allotted shape our routes and stops along the way. The car needs to be serviced; we must have enough gas, money and maps or GPS to help us safely get where we want to be.

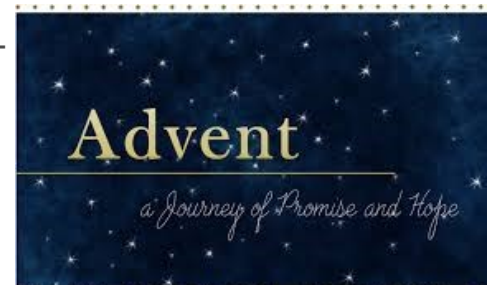
Our baptism into the Christian life set us all on a journey to the fullness of God's kingdom. Over time we become more aware of what this means and what demands it makes on us for its success. The Church's liturgical seasons help us chart our course and develop the kinds of attitudes and behaviors to help us get there.

The first season of our new liturgical year is now upon us. The Scriptures of the four Sundays of Advent admonish us clearly that such a journey requires intentional preparation, and is not for the faint of heart. Today we are reminded that we are sinful, and must depend on the Potter to help us shape our lives rightly for Kingdom living. On Dec. 10 we are told that God is coming in power, and we must make straight the way of the Lord in our hearts. We read on Dec. 17 Jesus' great manifesto for discipleship: "The Spirit of the Lord is upon me... to bring glad tidings, to heal the brokenhearted and release to prisoners...", which Jesus later proclaimed as the blueprint for his life. And on the 4th Sunday we hear God's promise to raise up for Israel a king whose dominion will endure over all forever, reminding us that we belong to something much bigger than ourselves.

A constant theme throughout these weeks is that of watchfulness and anticipation. Repeatedly we hear "Stay awake! Be watchful and ready!" Self-absorption and lack of attention to the realm of the Spirit will not serve us well. The presence and action of our God is everywhere to be seen and celebrated, but how easy it is to become drowsy and live our lives in a spiritual stupor. Advent issues for us a clarion call to attention, that we might recommit ourselves to our journey, to seeing God's presence everywhere and to incarnating Jesus in our lives. This Christian journey is the most important one we shall ever make. Are you awake and engaged?

The Church's Liturgical Year immerses us in the foundational events of our faith, not as an historical exercise, but so that we can join Christ in being active participants in our salvation history. In the Liturgy we claim our membership in the holy people for whom God has entered history, and we unite ourselves with Jesus our head in offering our lives to God for the sake of the world.

Next Sunday we will begin having some of our RE families present the gifts at the 10:30 mass. As they walk forward, in your heart walk with them. These families will represent all of us who are called to present ourselves with Christ on the altar, in his never-ending offering of love to God. The gifts of bread and wine we offer, as well as our lives, are put on the altar so that all of these gifts can be transformed into the Body and Blood of Christ, to then be given as nourishment for a suffering world.



THE ALZHEIMER'S ASSOCIATION'S FAITH OUTREACH INITIATIVE AND SFX PASTORAL CARE MINISTRY

St. Louis University's Health Resource Center and the Geriatric Education Center are offering a FREE Comprehensive Geriatric Assessment clinic for people 65 or older. The clinic is the first Thursday of the month at the Health Resource Center, 1408 North Kingshighway, #213.

A comprehensive cognitive and physical assessment is more extensive than a screening appointment. Over a two hour visit (approximate), the team will conduct the following assessments: medical, physical therapy, occupational therapy, speech therapy, nutrition, and social services.

To schedule an appointment please contact the SLU Geriatric Division Office at 314-977-8462.

ADVENT AND CHRISTMAS CELEBRATIONS

College Church will celebrate the coming of Christ with these liturgical offerings:

- December 1** Sunday morning confessions 9:15 am
- December 7** 5:15 vigil mass for the Holyday in the Chapel
- December 8** Immaculate Conception Holyday
7:15 am in the Chapel of Our Lady
Noon and 5:15 pm in the Church
- December 16** Parish Reconciliation Service 3:45 pm
- December 24** Christmas Eve Family Mass 4:30 pm
Children’s Choir Prelude 4:00 pm
Mass during the Night at 11:00 pm
Choir prelude at 10:30 pm
- December 25** Christmas Day Liturgy 10:30 a.m.
- January 1** Feast of Mary, the Mother of God
10:30 am in the Church

*For more information, call the Parish Center at 977-7300
or visit our website at: collegechurch.slu.edu
Complimentary Parking is available in the SLU Laclede Garage*



Christmas Flowers Donation

We are now accepting donations for flowers in church for this Christmas season in honor of the living and deceased members of the parish or your family.

Please mark your donation for “flowers” and list the name(s) of those you wish to remember. You may place your donation in the collection basket or give it to Mary Beth Erickson. At the end of the season, the flowers may be taken home by those who made a donation.

Suggested donation: \$10

Please print clearly:

IN HONOR or MEMORY OF: _____

DONATED BY: _____



PRESIDERS

Dec. 9-10

Saturday

5:15 pm Fr. Dan White, SJ

Sunday

8:00 am Fr. Chris Collins, SJ

10:30 am Fr. Dan White, SJ

Dec. 16-17

Saturday

5:15 pm Fr. Jason Brauninger, SJ

Sunday

8:00 am Fr. Jason Brauninger, SJ

10:30 am Fr. Mike Tueth, SJ

WEEKLY READINGS

Monday: Dn 1:1-6, 8-20; Dn 3:52, 53, 54, 55, 56; Lk 2:1-4

Tuesday: Dn 2:31-45; Dn 3:57, 58, 59, 60, 61; Lk 21:5-11

Wednesday: Dn 5:16, 13-14, 16-17, 23-28; Dn 3: 62, 63, 64, 65, 66, 67; Lk 21: 12-19

Thursday: Rom 10:9-18; Ps 19:8, 9, 10, 11; Mt 4:18-22

Friday: Dn 7: 2-14; Dn 3: 75, 76, 77, 78, 79, 80, 81; Lk 21: 29-33

Saturday: Dn 7: 15-27; Dn 3: 82, 83, 84, 85, 86,87; Lk 21: 34-36

Sunday: Is 63: 16b-17, 19b, 64: 2-7; Ps 108: 2-3, 15-16, 18-19; 1Cor 1: 3-9, Mk 13: 33-37

ADVENT PROGRAMS AT MERCY CENTER

► **Advent as a Time of Sabbath: A Retreat Led by Rev. Wayne Muller**, December 1 - 2, 2017 at Mercy Center, Frontenac. Friday: registration 4:30 P.M. program following. Saturday: program 9:00 am - 5:00 pm, followed by optional 5:30 pm dinner and fireside chat. Wayne Muller is a minister, therapist, community advocate, and best-selling author of *Sabbath: Restoring the Sacred Rhythm of Rest*. See mercycenterstl.org for **cost which is due Nov. 20**.

► **Advent Quiet Days**, Friday - Sunday, December 8 - 10, 2017 at Mercy Center, Frontenac. Come for a time of personal Advent Sabbath, enjoying one or more days of quiet. No presentations or schedules. Each overnight: \$65, includes three meals. Day only: \$30, includes lunch. **Total payment due Nov. 24**

► **Advent and Christmas Performance** by the Catholic Student Center Choir at Mercy Center, Frontenac, Sunday, December 10, 2017, 3:00 pm. This contemporary choir from Washington University will celebrate in song both Advent waiting and Christmas joy. A free will offering will be given to the choir. **Online registration appreciated by Dec. 8**

ADVENT

HOPE PEACE JOY LOVE



**FEAST OF
OUR LADY OF
GUADALUPE
DECEMBER 12, 2017**

at
Our Lady of Guadalupe
1115 S. Florissant Rd
63121
314-522-9264

11:00 pm Gathering (Dec. 11)
12:00 am Prayer and song
1:00 am Mass in Spanish
2:00- Las Mananitas:
4:30 am prayers, dances,
song, breakfast
4:30 am Rosary, reenactment
of story
6:00 am Mass in Spanish
7:00 am Breakfast
9:00 am Mass in English
10:00 am
Brunch

